

A redeveloped business campus featuring mid-century style, customizable office space, and contemporary convenience in the heart of Edina

pentagonpark.com



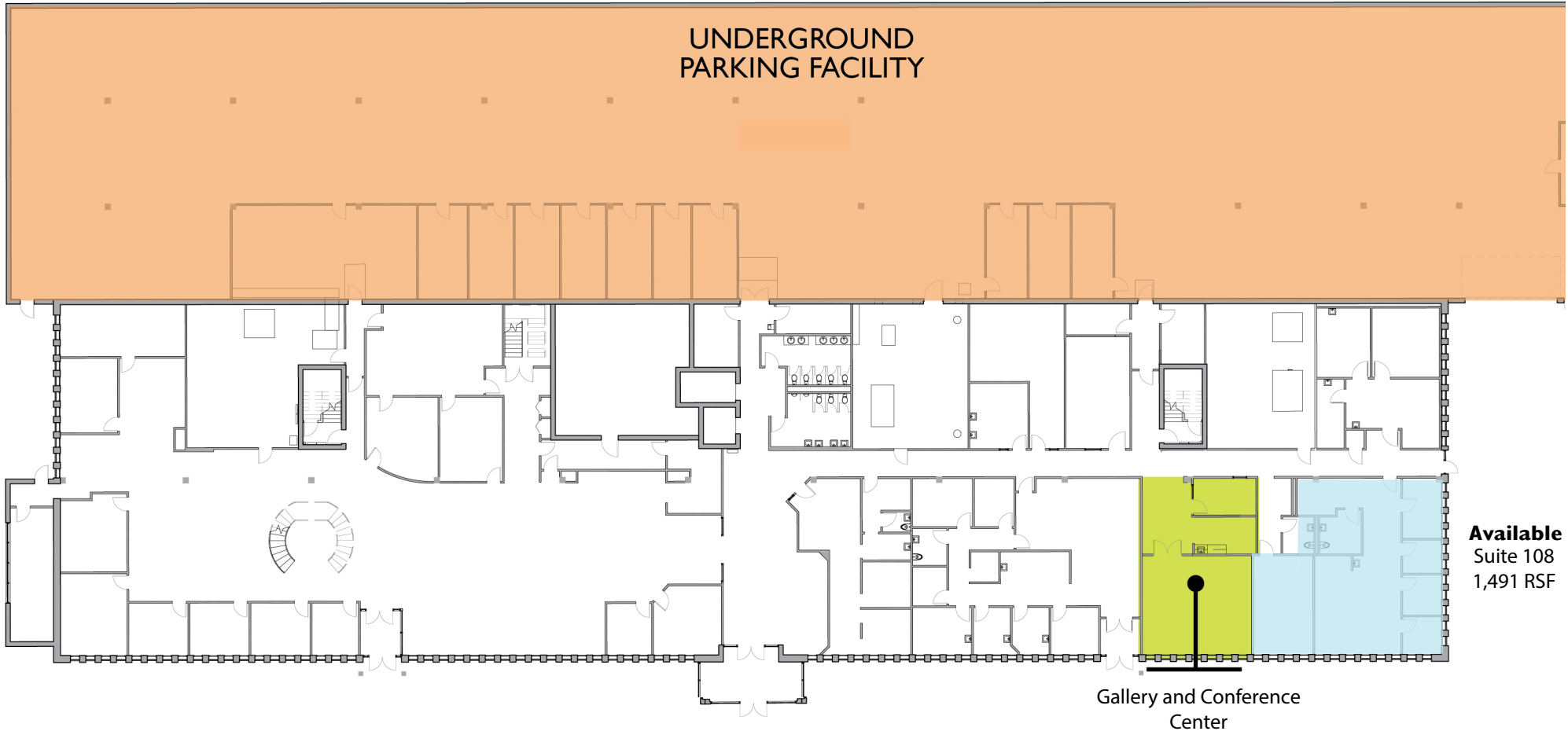
Pentagon Park

For information regarding leasing or renovations at Pentagon Park, please contact:

Charlie Nestor 612-623-2475
CharlieN@hillcrestdevelopment.com

Emily Claridge 612-623-2485
EmilyC@hillcrestdevelopment.com

Joe Klein 612-623-2470
JoeK@hillcrestdevelopment.com



7600 Parklawn Avenue - first floor

A redeveloped business campus featuring mid-century style, customizable office space, and contemporary convenience in the heart of Edina

pentagonpark.com



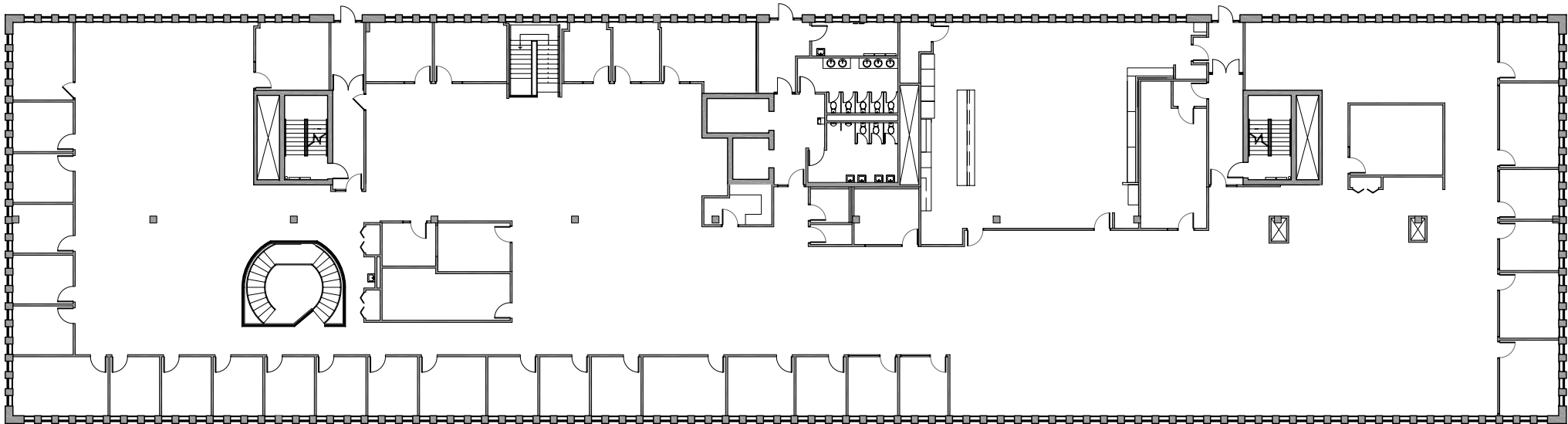
Pentagon Park

For information regarding leasing or renovations at Pentagon Park, please contact:

Charlie Nestor 612-623-2475
CharlieN@hillcrestdevelopment.com

Emily Claridge 612-623-2485
EmilyC@hillcrestdevelopment.com

Joe Klein 612-623-2470
JoeK@hillcrestdevelopment.com



7600 Parklawn Avenue - second floor

A redeveloped business campus featuring mid-century style, customizable office space, and contemporary convenience in the heart of Edina

pentagonpark.com



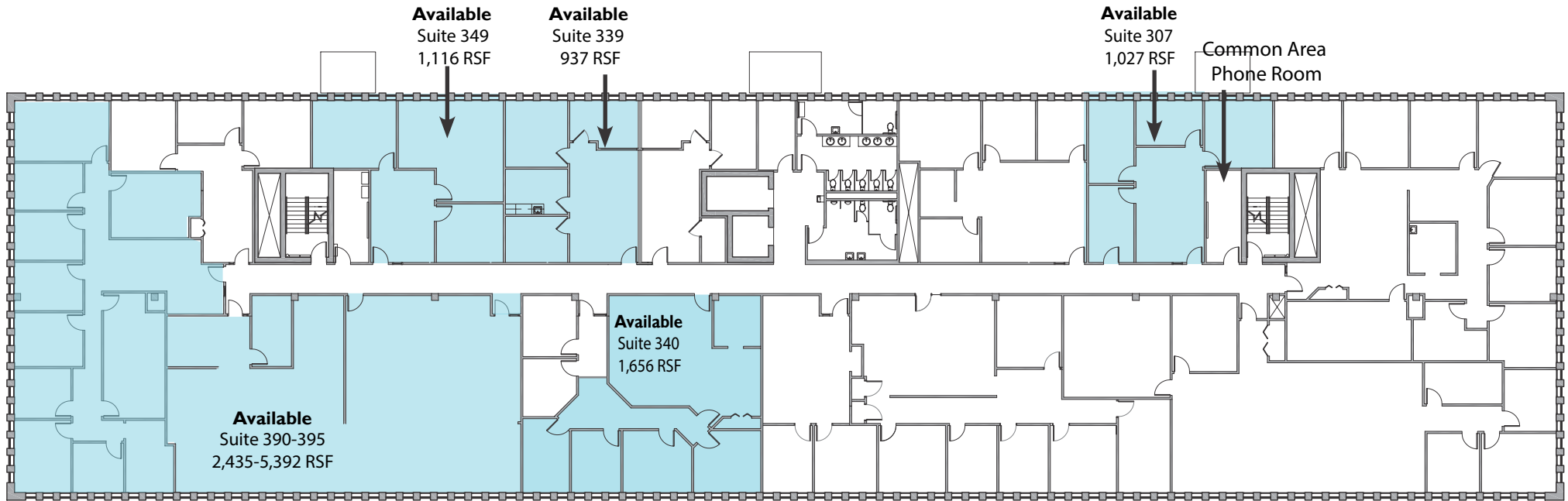
Pentagon Park

For information regarding leasing or renovations at Pentagon Park, please contact:

Charlie Nestor 612-623-2475
CharlieN@hillcrestdevelopment.com

Emily Claridge 612-623-2485
EmilyC@hillcrestdevelopment.com

Joe Klein 612-623-2470
JoeK@hillcrestdevelopment.com



7600 Parklawn Avenue - third floor

A redeveloped business campus featuring mid-century style, customizable office space, and contemporary convenience in the heart of Edina

pentagonpark.com



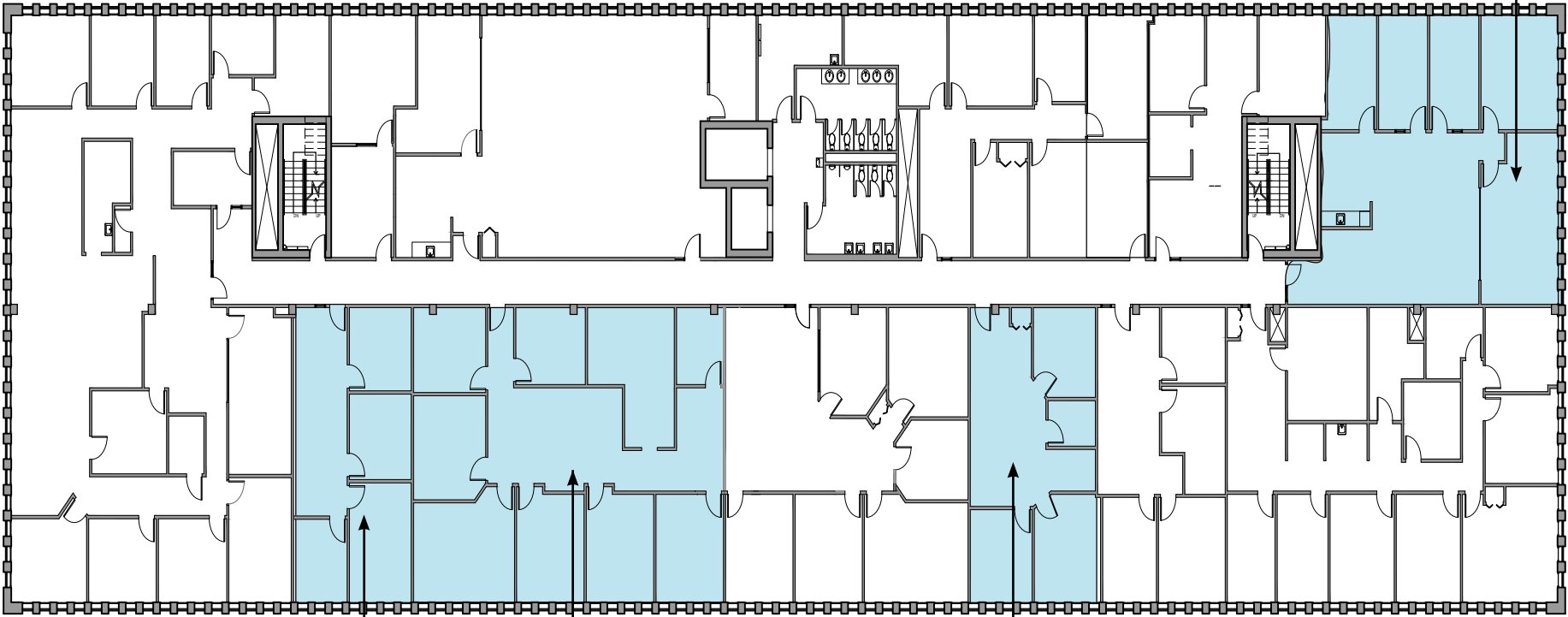
Pentagon Park

For information regarding leasing or renovations at Pentagon Park, please contact:

Charlie Nestor 612-623-2475
CharlieN@hillcrestdevelopment.com

Emily Claridge 612-623-2485
EmilyC@hillcrestdevelopment.com

Joe Klein 612-623-2470
JoeK@hillcrestdevelopment.com



Available
Suite 400
2,022 RSF

Available
Suite 448
1,025 RSF

Available
Suite 446
2,666 RSF

Available
Suite 412
1,082 RSF

7600 Parklawn Avenue - fourth floor